

# INTRODUCING THE VIALUXE™ LASER SYSTEM



**VIALUXE™**  
LASER SYSTEM



## THE FEMTOSECOND LASER: AN EXTRAORDINARY LEGACY

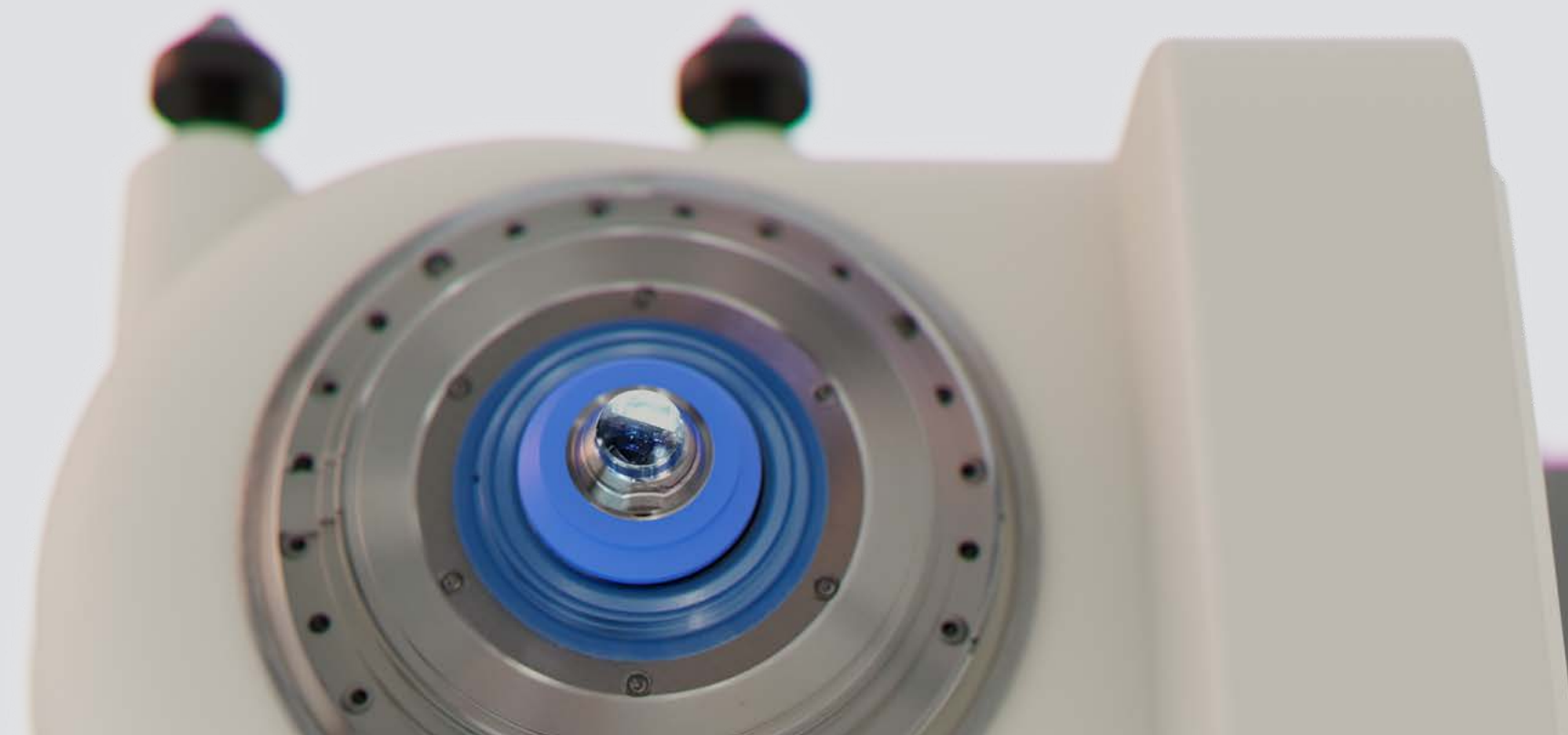
The femtosecond laser's ultra-precise modality has revolutionized anterior segment surgery with increased safety, precision and predictability.

The femtosecond laser uses small amounts of non-thermal energy to minimize damage to adjacent tissues. Procedures like LASIK and FLACS have firmly established the safety profile of the photo-disruptive mechanism.

Building on this rich legacy of femtosecond laser use in ophthalmology, the ViaLase® technology is designed to deliver unmatched safety, accuracy and precision to improve upon current glaucoma treatment options.

## VIALASE® IS FUELING THE PRACTICE OF NONINVASIVE INTERVENTIONAL GLAUCOMA

With over 200 years of combined experience in developing and commercializing femtosecond laser technology, the ViaLase team is singularly focused on changing the way glaucoma is managed.



## MEET THE VIALUXE™ LASER SYSTEM



When it comes to a successful glaucoma intervention, **SEEING IS BELIEVING.** Only ViaLuxe offers a noninvasive solution that combines femtosecond laser precision guided with micron-accurate imaging in one revolutionary glaucoma treatment.

### ViaLens™ Patient Interface

A technological first, our proprietary, single-use patient interface represents the final element in the optical path that enables precise delivery of laser pulses into the trabecular meshwork.

An innovative, curved design matches 99.6% of adult corneas.\*

Unlike conventional gonioscopy methods that require manual manipulation, the ViaLens' delicate vacuum suction gives you control of eye, head and body movement while minimizing transient IOP rise.

\*Data on file.



**ViaVue™ Gonio Camera**  
As the first step in the **FLIGHT** procedure, ViaVue allows you to predictably identify and select your desired treatment location, all without applying suction to the eye.

Featuring proprietary high-definition imaging capabilities, ViaVue enables you to overcome traditional gonioscopy limitations with uniform illumination of angle anatomy and undistorted, wide field-of-view visualization.





#### **ViaLuxe™ Laser**

A custom-engineered optical scanning system enables the delivery of tightly focused femtosecond laser pulses into the iridocorneal angle, thus permitting precise photodisruption of the trabecular meshwork.

## SEE BETTER TREAT BETTER

#### **Unmatched Visualization & Treatment Validation**

Proprietary HD imaging capabilities overcome traditional gonioscopy limitations with uniform illumination of the angle, which enables undistorted, wide field-of-view visualization.

#### **Noninvasive, Incision Free**

The incision-free approach of **FLight** may allow surgeons to deliver results similar to OR-based interventions without opening the eye, thus eliminating complications associated with surgery.

#### **Improved Patient Experience**

The noninvasive nature of the procedure minimizes disruption in patient's quality of life. Potential reduction in medication burden also provides benefit by alleviating patient noncompliance.

#### **Performed as a Standalone Procedure**

Increases patient access to an effective primary open-angle glaucoma (POAG) treatment.



UNPARALLELED VISUALIZATION  
MICRON-ACCURACY FOR POSITIONING AND TREATMENT



Proprietary illumination and HD imaging capabilities allow for consistent identification of key anatomical landmarks and provide unparalleled visualization of angle anatomy.



## THE FLIGHT PROCEDURE

The ViaLuxe™ Laser System creates a precise, customized drainage channel through the trabecular meshwork at the iridocorneal angle — increasing aqueous outflow without opening up the eye.



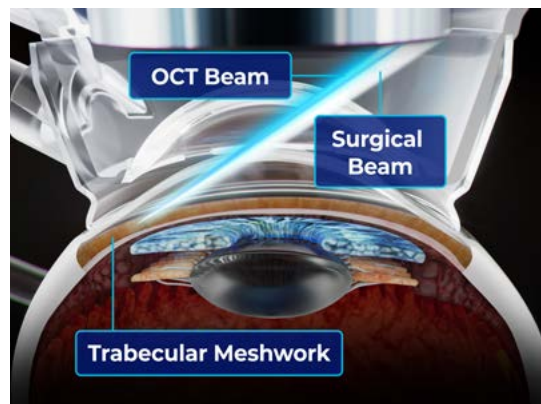
**1**

The patient is docked to the laser system via the proprietary ViaLens™ Patient Interface and secured via mild vacuum suction, giving the surgeon control of the patient's eye.



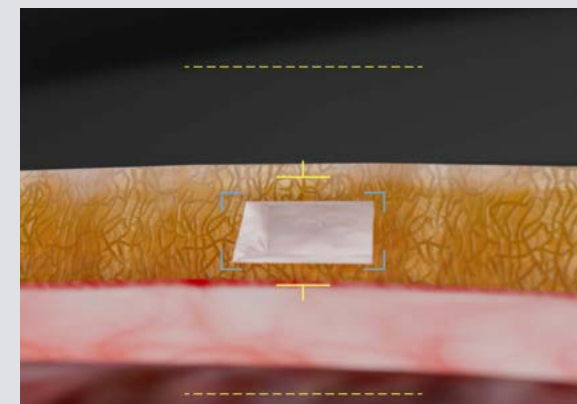
**2**

Proprietary gonioscopic capabilities display real-time, high-resolution video of the iridocorneal angle, allowing the surgeon to inspect the angle and select the desired treatment location.



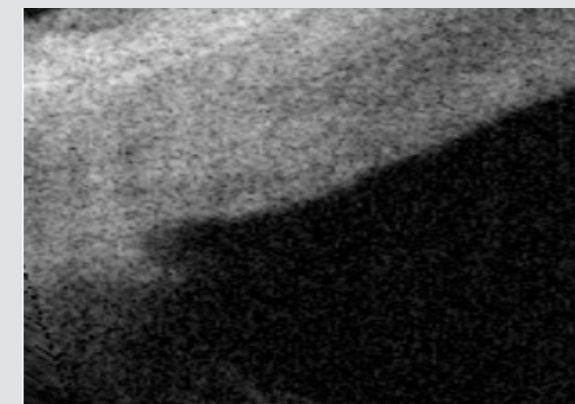
**3**

The specialized optical delivery system is designed to deliver tightly focused femtosecond laser pulses through the cornea and into the iridocorneal angle while minimizing damage to adjacent tissue.



**4**

During treatment, a single channel that is 500µm in width and 200µm high is created through the trabecular meshwork, thus treating just 5 degrees of the angle.

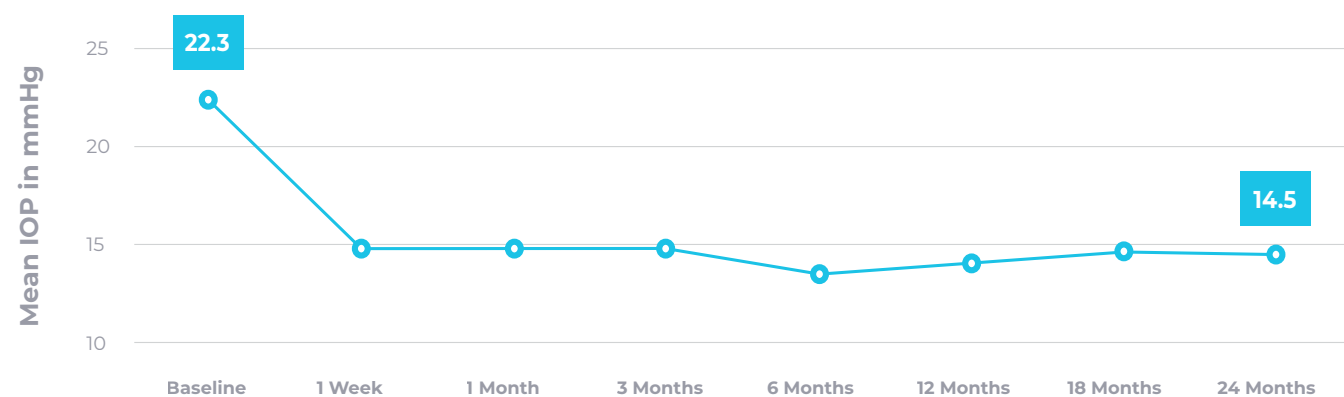


**5**

Following creation of the drainage channel, OCT imaging allows the user to visualize sub-surface tissue structures relative to the location of the channel and document those imaging findings.

## FIRST-IN-HUMAN STUDY RESULTS AT 24 MONTHS

**34.6%** mean IOP reduction after 24 months



**34.6%**  
mean IOP lowering at 24 months

No serious adverse events related to the treatment at any point in time

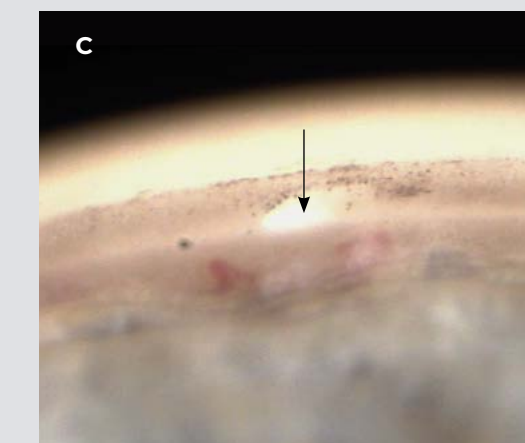
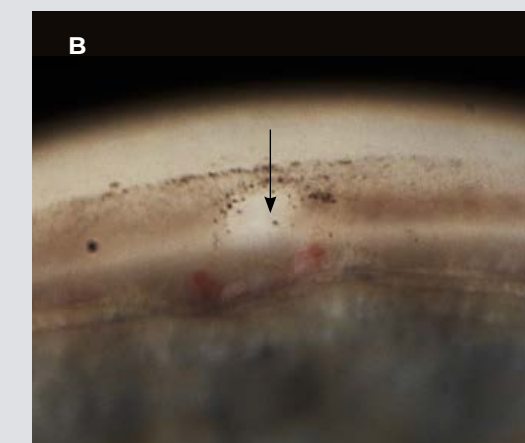
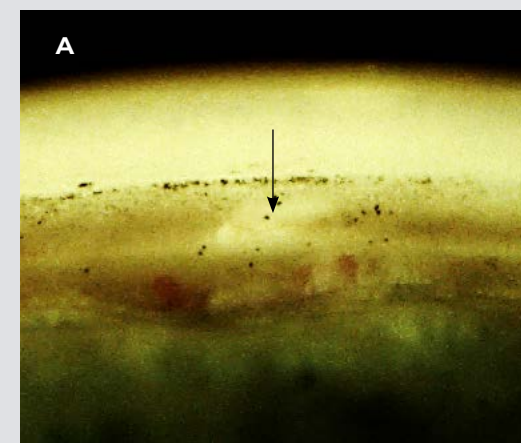
### Study Design:

The 24-month prospective, non-randomized, single-center, interventional, single-arm trial evaluated 18 eyes with open angle glaucoma following FLigHT treatment, which consisted of the creation of a single channel through the trabecular meshwork and into Schlemm's canal.

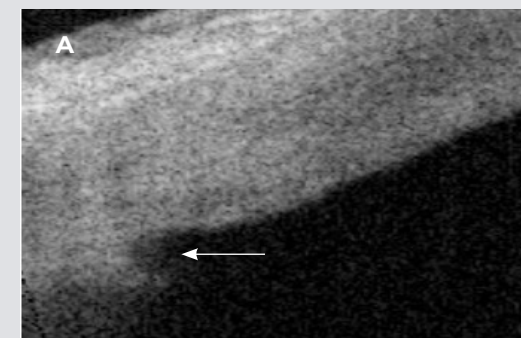
Reference: Nagy Z.Z., Kranitz K., Ahmed I.I.K., De Francesco T., Mikula E. & Juhasz T., First-in-Human Safety Study of Femtosecond Laser Image-Guided Trabeculotomy for Glaucoma Treatment, Ophthalmology Science, Volume 3, Issue 4, 100313, December 2023, Page 1: Efficacy and Safety Data

## DURABILITY OF FLIGHT TREATMENT AT 24 MONTHS

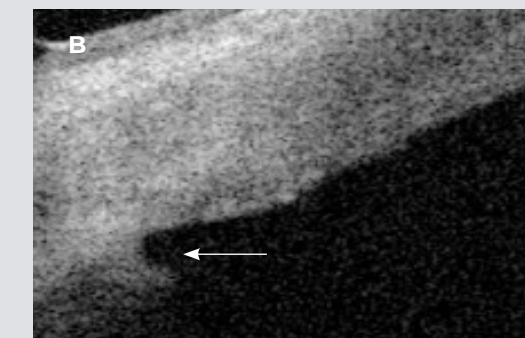
Well-defined channels clearly visible at 24 months by proprietary on-board ViaVue™ gonioscopic camera and anterior segment OCT, with no evidence of closure or scarring.



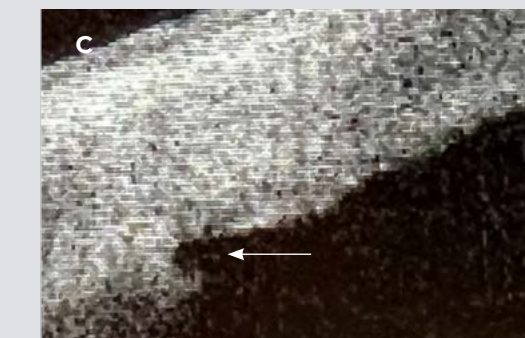
DAY ONE



18 MONTHS



24 MONTHS



**Disclaimer:** Channel is validated by third-party OCT

## TECH SPECS

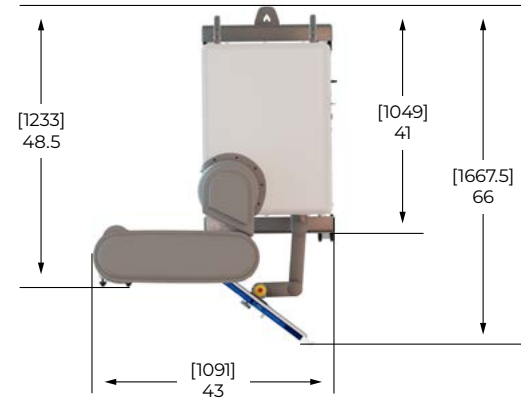
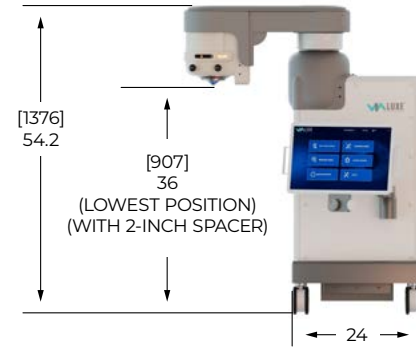
### Dimensions & Weight

**System Weight** / 600 lbs (272 kg)

**Dimensions (Shipping Position)** / W: 24" x L: 53"  
(W: 60cm x L: 135cm)

**Dimensions (Surgical Position)** / W: 43" x L: 62.5"  
(W: 109cm x L: 159cm)

**Minimum Door/Hallway Width** / 42" (107cm)



### Shipping Crate

**Dimensions (WxHxD)** / 49.5" x 63.5" x 68"  
(128cm x 161cm x 173cm)

**Shipping Weight** / 1017 lbs (461 kg)



### Space Requirements

**Recommended Minimum Room Dimensions** / 11.5' x 10' (3.5m x 3m)

**Floor/Foundation** / Smooth, flat level surface, capable of 562.2lbs (255kg) of continuous system load

### Recommended Layout



### Climate

**Room Temperature** / Stable, between 65°F-75°F (18°C-24°C)

**Room RH%** / 30-40%, non-condensing

**Air** / Clean ambient air, free of dust and aerosols

**Temperature Control** / Independent room thermostat

### Network Connectivity

**Network Connectivity** / RJ-45 Physical Connection

**DHCP Service** / Dynamic Host Configuration

**DNS Service** / Domain Name System

**Internet Gateway** / Gateway Access to the Internet

### Electrical Requirements

**Input Power** / Configurable - (120 VAC / 6A, 220 – 240 VAC / 3A) @ 50/60 Hz

**Max. Electrical Load** / <= 720W

**Overload Protection** / Dedicated 10A Mechanical Circuit Breaker  
(Integrated into main power socket)

**System Power Consumption** / < 600W

### Laser Classification per IEC 60825-1:2014

**Surgical Laser (Femtosecond) 1030nm** / Class 3B

**OCT Laser ~770-930nm** / Class 3B

**Aiming Beam 630-640nm** / Class 2

### Laser Safety

**Laser Interlock Connector** / Intended to be used with external safety devices  
such as door interlock

**Emergency Stop Switch** / Shuts power off to entire system

### Patient Surgical Bed/Chair "Z" Travel Requirements

The ViaLuxe Laser System can be raised and lowered in order to be compatible with a range of surgical beds. Dimensions stated are from floor to eye contact

**ViaLuxe Minimum Z Height** / 32" (81cm)

**ViaLuxe Maximum Z Height** / 43" (109cm)

# SEEING IS BELIEVING

For more information, visit our website

[www.vialase.com](http://www.vialase.com)



ViaLase, Inc., 95 Enterprise, Suite 100, Aliso Viejo, CA 92656